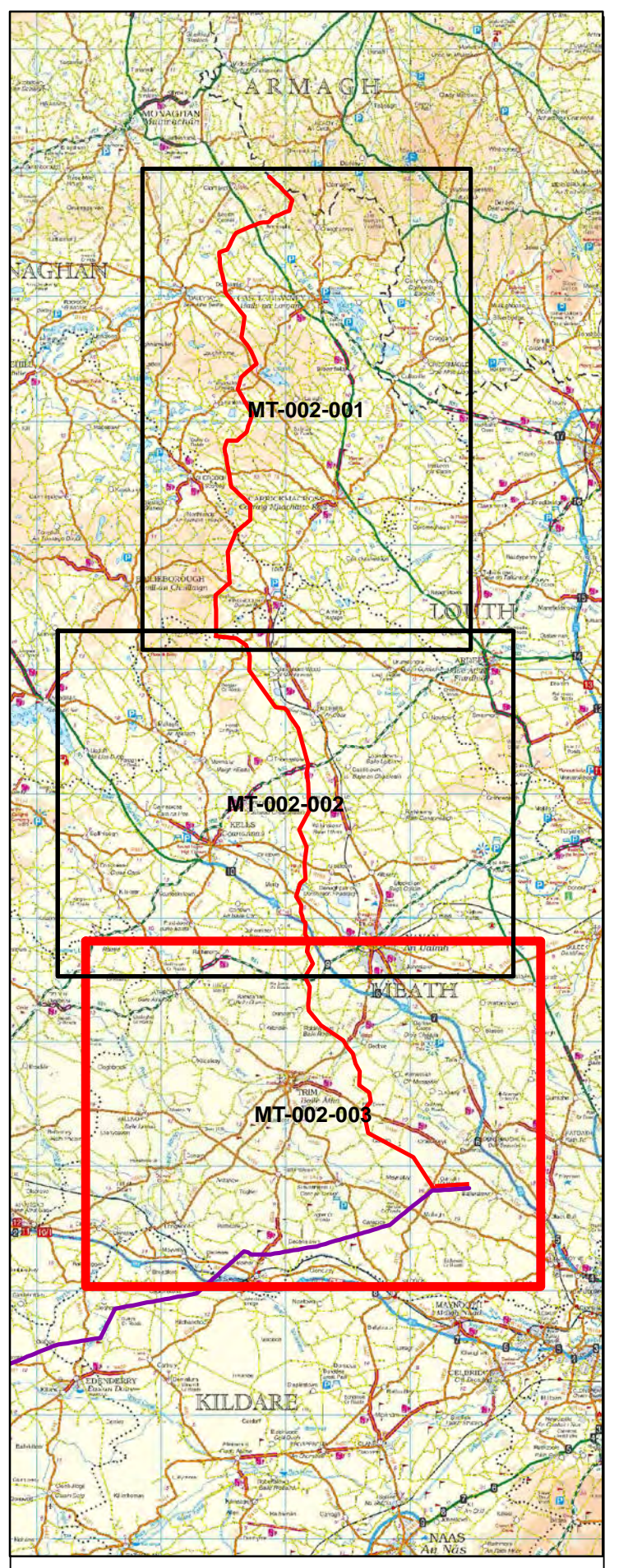
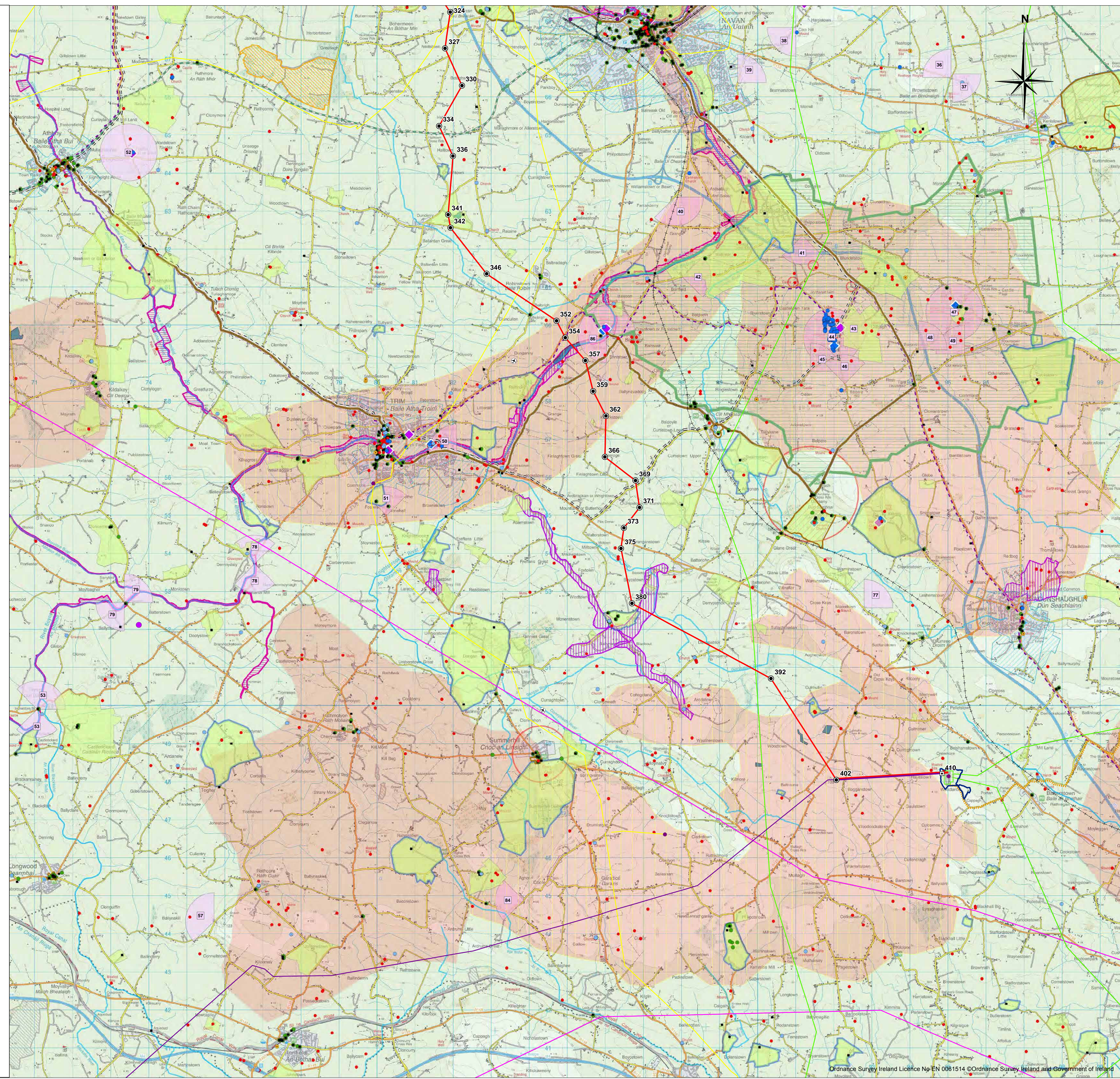
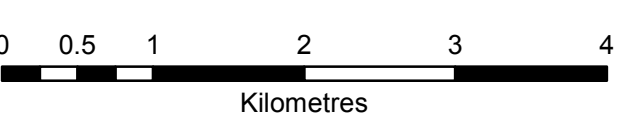


- Legend**
- Proposed Angle Tower Location
 - Existing End Tower
 - Proposed Line Route
 - Existing 400 kV Double circuit Line
 - Existing Oldstreet-Woodland 400 kV Line
 - Woodland Substation Planning Area
 - Existing Woodland Substation Boundary
 - ESB Property Boundary
- Ecology**
- Swan flight lines 2007/08
 - Swan flight lines 2008/09
 - Swan flight lines 2009/10
 - Swan flight lines 2010/11
 - Swan flight lines 2011/12
 - Swan flight lines 2012/13
 - Swan flight lines 2013/14
 - Historical Swan Site
 - Swan Site recorded in Winter Survey Period 1: 2007/2008
 - Swan Site recorded in Winter Survey Period 2: 2008/2009
 - Swan Site recorded in Winter Survey Period 3: 2009/2010
 - Swan Sites recorded in Winter Survey Period 4 : 2010/2011
 - Swan Site recorded in Winter Survey Period 5: 2011/2012
 - Swan Site recorded in Winter Survey Period 6: 2012/2013
 - Swan Site recorded in Winter Survey Period 7: 2013/2014
 - Sensitive Ecological Receptors
 - Natural Heritage Area (NHA)
 - Proposed Natural Heritage Area (pNHA)
 - Special Area of Conservation (SAC)
 - Special Protection Area (SPA)
- Geology**
- Geological Interest Site (identified by GSI)
 - Geological Interest Site (surveyed by GSI)
- Landscape**
- Boyne Valley Sites
 - Meath Landmarks
 - Draft Landscape Conservation Area
 - Meath Landscapes of Exceptional Value
 - Meath High Sensitivity Landscape
 - Areas of Potential Tourism
 - Scenic Viewpoints for County Meath
- Infrastructure**
- 38 kV line
 - 110 kV line
 - 220 kV line
 - National Road
 - Motorway
 - Gas Pipeline - Considered but not shown
 - East-West Interconnector
 - Windfarm
 - Gas Stations - Considered but not shown
 - Electricity Station
- Cultural Heritage**
- Monuments Covered by Preservation Orders
 - National Inventory of Architectural Heritage (NIAH)
 - National Monuments
 - Potential National Monument
 - Record of Protected Structures (ROI)
 - Record of Monuments and Places(RMP)/Sites and Monuments Record (SMR)
 - Architectural Conservation Area (ACA)
 - Demesne Landscapes and Historic Gardens
- Miscellaneous**
- Railway
 - Planned Navan Line (Disused Railway Track)
 - Boyne Valley Driving Route
 - Meath Existing Driving Routes
 - Meath Existing Paths and Cycling Routes
 - Meath Potential Paths and Cycling Routes
 - Major river
 - Lake/Lough
 - Urban areas



NOTES:
 1. Transmission line and towers not to be scaled
 2. Discovery Series Tiles used: OS2826, OS2626, OS2624, OS2824



Issue	Date	Description	By	Chkd.
C	DEC 2014	Issued	G.F.	D.G.
B	JUL 2014	Issued	M.N.	D.G./M.N.
A	JAN 2014	Issued	M.S.	D.G./M.N.

Client:

Project: **NORTH SOUTH 400 kV INTERCONNECTION DEVELOPMENT**

Title: **MSA Line Route Map - Constraints 1:50 000 Planning Drawing Sheet 3 of 3**

Scale @ A1: 1:50,000

Prepared by: G.Fil
 Checked: O.McAlister
 Date: December 2014

Project Director: Damien Grehan

Planning Dwg Ref: MT-002-003

Patrick J. Tobin & Co. Ltd.
 Consulting, Civil and Structural Engineers,
 Block 10-4, Blanchardstown Corporate Park,
 Dublin 15, Ireland.
 tel: +353-(0)1-8030406
 fax: +353-(0)1-8030409
 e-mail: info@tobin.ie
 www.tobin.ie

No part of this document may be reproduced or transmitted in any form or stored in any retrieval system of any nature without the written permission of Patrick J. Tobin & Co. Ltd. as copyright holder except as agreed for use on the project for which the document was originally issued.

Drawing No.: 6244-1001

Issue: **C**